

# Cinegy Convert

server-based transcoding and batch processing



Cinegy Convert is Cinegy’s server-based transcoding and batch processing service. Designed to function like a network-based print server, it can be used to perform repetitive export and conversion tasks by “printing” material to pre-defined formats and destinations in any Cinegy Desktop through a simple drag-and-drop operation. Processing is performed on a specified Cinegy Convert server that acts as a print queue/spooler, processing tasks in order.

By automating repetitive tasks, Cinegy Convert saves time that can be applied to more important activities. It is an ideal tool for exporting material in different formats and for integration with third-party NLE systems.

## Cinegy Convert - job folders

Cinegy Convert allows material to be exported in different formats automatically. Simply drag-and-drop clips to a Cinegy Convert job folder.

These special folders can be set up to perform specific repetitive actions. Tasks assigned to a particular folder can be viewed, managed and monitored through the job folder window.

## Operating and managing job folders

Cinegy Convert job folders are created through the Cinegy enterprise manager and configured through the Cinegy Convert job server configurator. Unlimited job folders can be created to meet user requirements.

Each Cinegy Convert job type has its own customisable event processes, providing an additional level of control over how media is processed.

## Cinegy Convert - job server

The Cinegy Convert job server is a separate service that sorts tasks into job folders. As a new task is found, the job server starts the appropriate process. For faster processing, tasks can be distributed between several job servers using logical tasks grouping via user-defined processing groups.

Extensive logs, with configurable log levels, provide additional information about when, where and what tasks were performed by each job server.

## Automatic processing

Once dropped in the Cinegy Convert job folder window, tasks are queued and ready for processing. The Cinegy Convert job server utility performs assigned tasks automatically, saving time and effort.

Several clips can be dragged to a job folder at the same time. One job task will be created containing all the clips.

## KEY FEATURES

Centralized & automatic processing

Flexible & scalable

Easy to use

Customizable events

Notifications

Save time on repetitive tasks

Export to Avid & Final Cut Pro

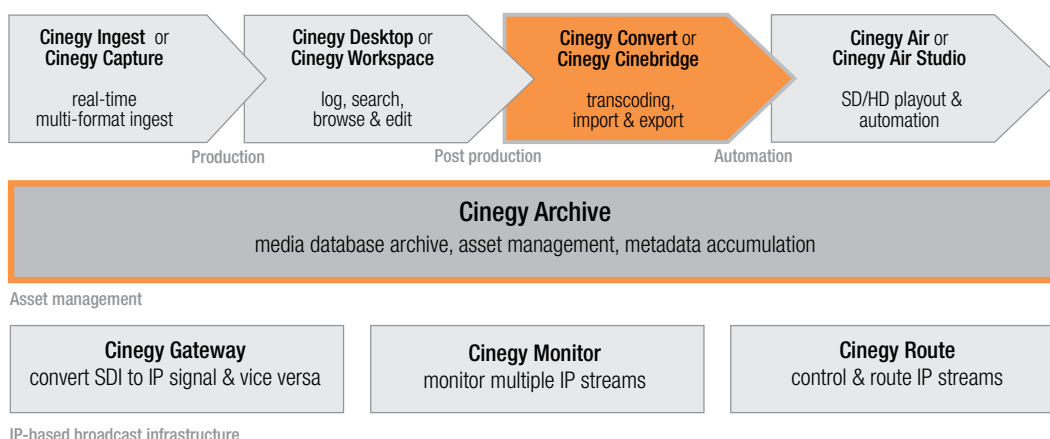
Export to file, Flash / H.264, WMV, AVI, MPEG and many more

Automatic import of media files

Convert media files

Export metadata

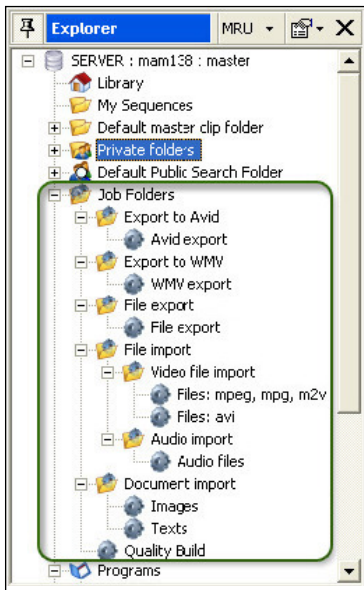
Scripting



Cinegy Workflow is an open platform consisting of a suite of software tools, applications and open APIs covering every stage of the digital production process. Cinegy Convert provides a batch processing service for automatic export and transcoding.

# Cinegy Convert

server-based transcode and batch processing



Cinegy Convert Job Folders

## Export to AVID

Raw media or sequences from the Cinegy Archive can be automatically transferred to Avid NLEs. Only the required media fragments (including configurable handles for accurate de-trimming) are created on the Avid storage. Media that is already available will be detected and re-used when possible, eliminating media duplication and wasted space. Supported compression formats include JFIF 15:1 / DVSD / DV25 / DV50 / IMX30 / IMX40 / IMX50 for SD and JFIF 15:1 / AVID DNXHD / DV100 for HD.

## Export to Final Cut

To export to FCP, Cinegy sequences are converted to Final Cut XML format with references to the Cinegy Archive media files. The resulting XML project files can be imported into Final Cut bins for further editing. Using shared storage means no media needs to be moved.

## Media File Export

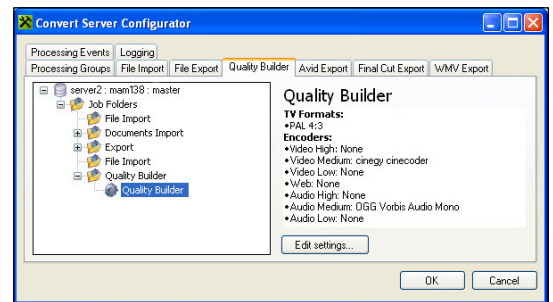
Regular media exporting tasks can be easily automated. Supported file export types include (but are not limited to) WMV, AVI, MPEG2 / H.264, MXF OP1a, MXF AS03, QuickTime, RealMedia and Flash. Along with transcoding, many other tasks can also be automated including email notifications, ftp upload and transfer to broadcast video servers. Metadata can be exported along with the media files e.g. in XML format. Scripts can be started automatically after a job is finished in order to continue additional processing.

## Media File Import

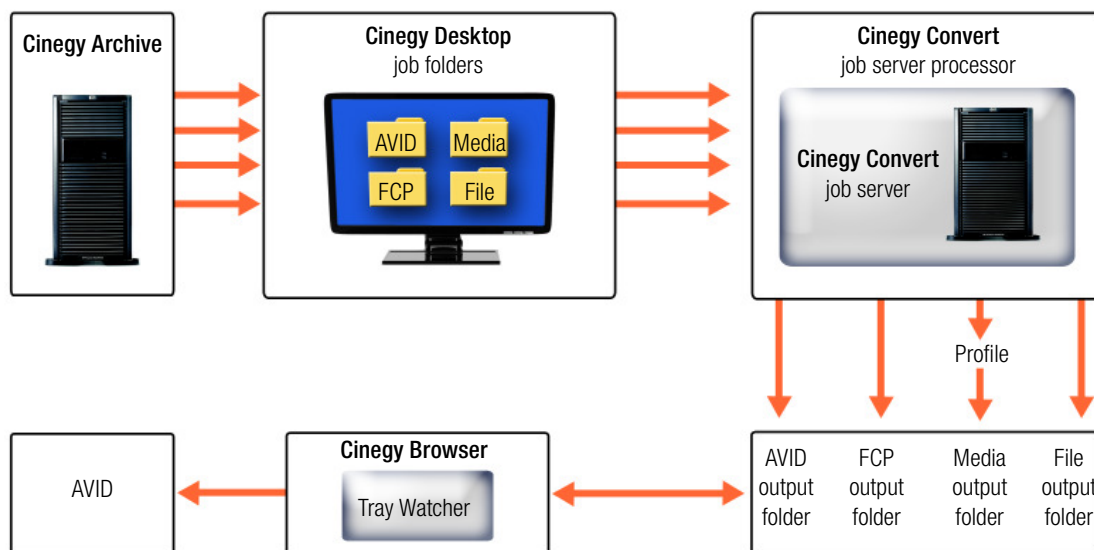
Cinegy Convert automatically imports media and registers metadata in the Cinegy Archive. New media files and documents are detected by the system's watch folder service and processed by the Cinegy Convert service according to the user-defined processing settings.

## Quality Builder

Cinegy Convert also supports the creation and registration of additional media qualities from the existing ones, or the rebuilding of existing qualities with different settings.



Configuring the Cinegy Convert Quality Builder options



Example Cinegy Convert Media Export Process